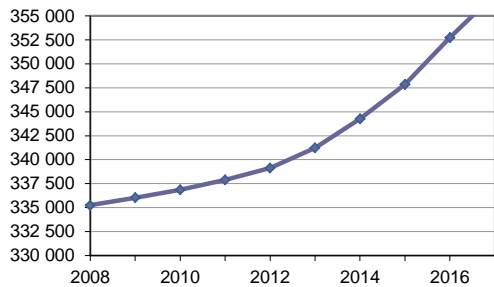
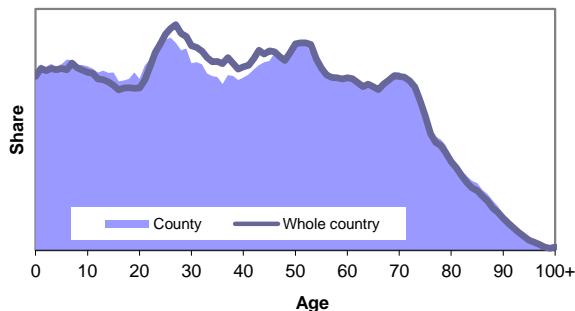


Population change 2008-2017



Population by age 2017



Population december 2017

| Age | Percentage shares | | | | | |
|------------|-------------------|----|-----|---------------|----|-----|
| | Municipality | | | Whole country | | |
| | W | M | Tot | W | M | Tot |
| 0-5 | 7 | 7 | 7 | 7 | 7 | 7 |
| 6-15 | 12 | 12 | 12 | 11 | 12 | 12 |
| 16-18 | 3 | 4 | 3 | 3 | 3 | 3 |
| 19-24 | 7 | 8 | 7 | 7 | 7 | 7 |
| 25-44 | 24 | 25 | 25 | 26 | 27 | 26 |
| 45-64 | 24 | 25 | 25 | 24 | 25 | 25 |
| 65-79 | 15 | 15 | 15 | 15 | 14 | 15 |
| 80+ | 7 | 4 | 6 | 6 | 4 | 5 |
| from 19-64 | 55 | 58 | 57 | 57 | 59 | 58 |

Population change after 2008

| Year | Population | Net-births | Net-migration | | |
|------|------------|------------|---------------|-------|-------|
| | | | W | M | Tot |
| 2008 | 335 246 | 411 | 668 | 565 | 1 233 |
| 2009 | 336 044 | 515 | 174 | 116 | 290 |
| 2010 | 336 866 | 480 | -7 | 347 | 340 |
| 2011 | 337 896 | 515 | 139 | 385 | 524 |
| 2012 | 339 116 | 443 | 428 | 335 | 763 |
| 2013 | 341 235 | 562 | 725 | 778 | 1 503 |
| 2014 | 344 262 | 695 | 823 | 1 495 | 2 318 |
| 2015 | 347 837 | 691 | 1 279 | 1 546 | 2 825 |
| 2016 | 352 735 | 949 | 1 583 | 2 337 | 3 920 |
| 2017 | 357 237 | 586 | 1 631 | 2 152 | 3 783 |

Migration pattern 2017

| | W | M | Tot |
|-------------------------|-------|--------|--------|
| Number of in-migration | 9 676 | 10 867 | 20 543 |
| from 19-24 år | 2 552 | 2 455 | 5 007 |
| Number of out-migration | 8 045 | 8 715 | 16 760 |
| from 19-24 år | 2 481 | 2 167 | 4 648 |
| Net migration | 1 631 | 2 152 | 3 783 |
| from 19-24 år | 71 | 288 | 359 |

Migration 2017

| Number of individuals | | | |
|-----------------------|-------|----------------------|-------|
| In-migration from | | Out-migration to | |
| Abroad | 5 278 | Västra Götalands län | 2 326 |
| Västra Götalands län | 2 158 | Stockholms län | 1 552 |
| Stockholms län | 1 181 | Skåne län | 1 249 |
| Skåne län | 1 064 | Östergötlands län | 1 111 |
| Östergötlands län | 998 | Abroad | 882 |
| Kronobergs län | 688 | Kronobergs län | 657 |
| Kalmar län | 682 | Hallands län | 639 |
| Hallands län | 475 | Kalmar län | 531 |
| Uppsala län | 240 | Örebro län | 273 |
| Örebro län | 219 | Uppsala län | 235 |

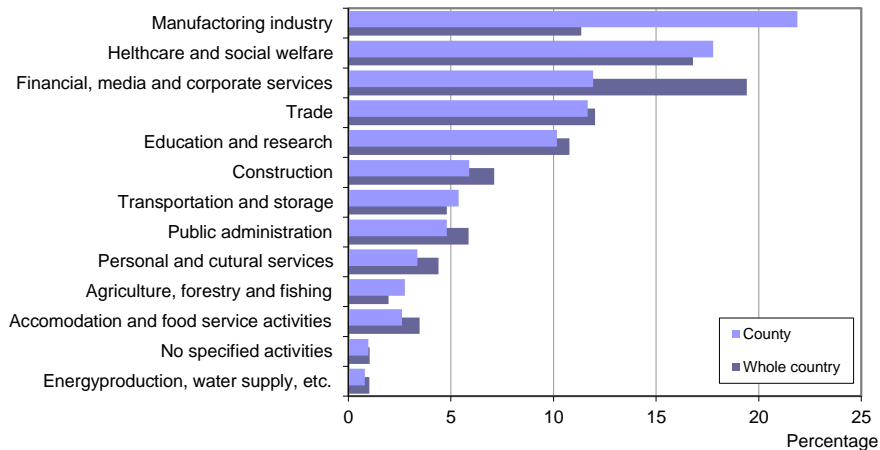
Foreign born 2017

| Percentage of population | W | M | Tot |
|--------------------------|----|----|-----|
| County | 17 | 17 | 17 |
| Whole country | 19 | 19 | 19 |

Number of women per 1 000 men, age 20-44 år, 2017

| County | Country |
|--------|---------|
| 921 | 960 |

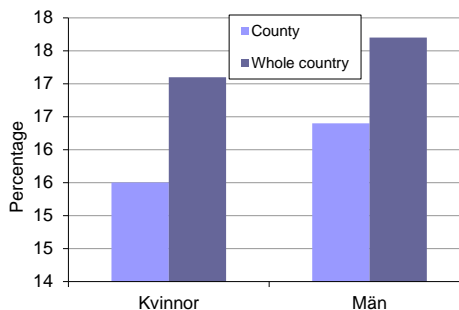
Employed by area of work (night time population age 20-64) 2016



Percentage of economically active 2012-2016

| Percentage of population age 20-64 | Whole country | |
|------------------------------------|---------------|---------|
| | County | country |
| 2012 | 80,9 | 77,1 |
| 2013 | 80,6 | 77,1 |
| 2014 | 80,7 | 78,5 |
| 2015 | 81,3 | 77,9 |
| 2016 | 82,0 | 78,6 |

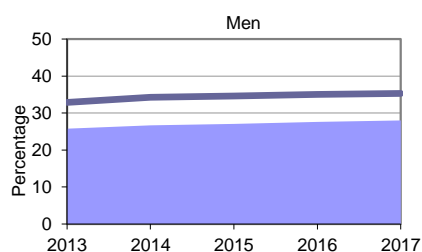
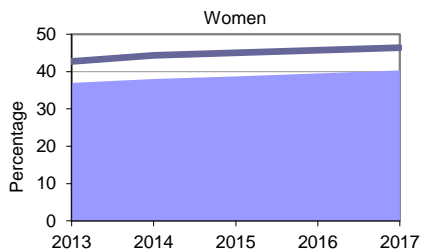
Percentage born abroad of total population economical active (age 20-64) 2016



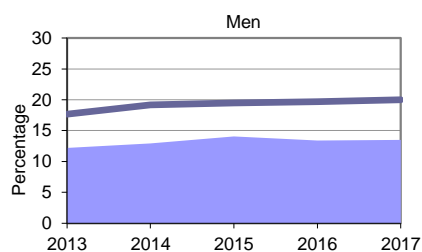
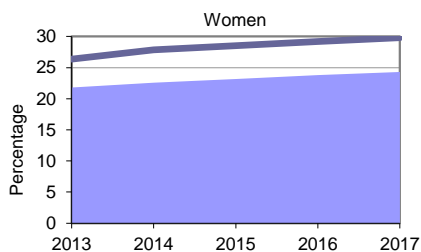
Economically active 2016

| Percentage of population age 20-64 | Whole country | |
|------------------------------------|---------------|---------|
| | County | country |
| Women | 80,2 | 77,0 |
| Men | 83,6 | 79,5 |
| Total | 82,0 | 78,6 |

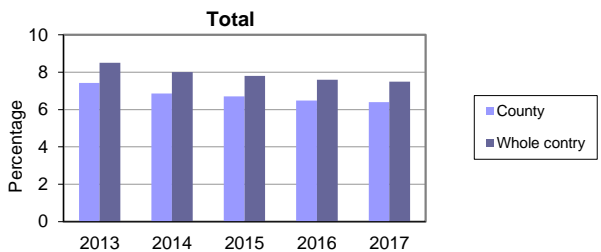
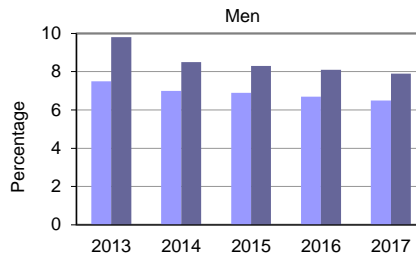
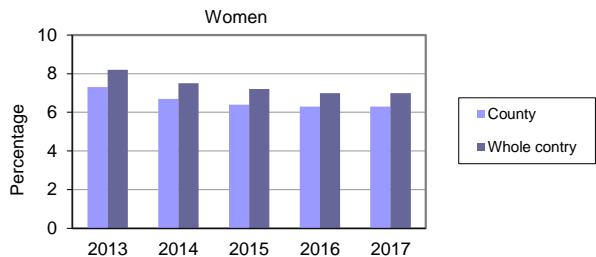
Percentage of population with post secondary education age 20-64



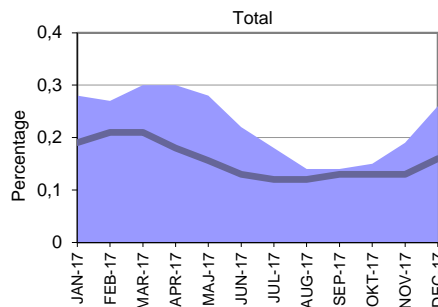
Percentage of population with long post secondary education age 20-64 (≥3 years) age 20-64



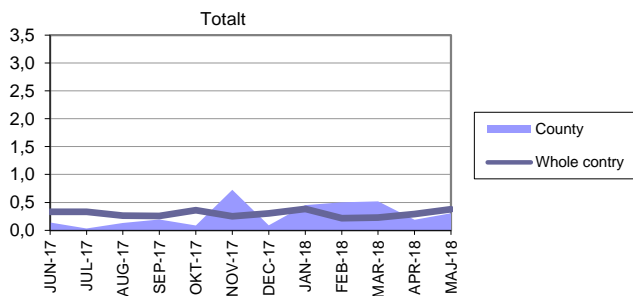
Unemployment rate and job-seekers in market policy programmes (age 16-64)



Share vacant jobs per job-seeker



Number of redundancies per 1 000 residents



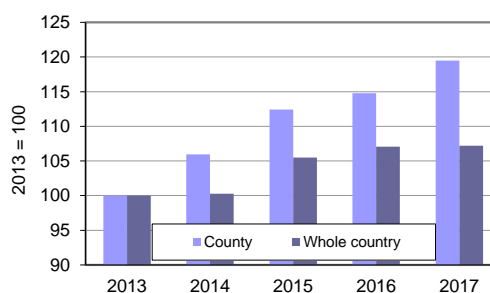
Largest commuting streams 2016

| Commuting to Jönköping county from: | | | Commuting from Jönköping county to: | | | | |
|-------------------------------------|-------|-------|-------------------------------------|----------------------|-------|-------|-------|
| | W | M | Tot | | W | M | Tot |
| Västra Götalands län | 1 442 | 2 053 | 3 495 | Västra Götalands län | 1 154 | 1 625 | 2 779 |
| Östergötlands län | 925 | 1 266 | 2 191 | Kronobergs län | 603 | 1 154 | 1 757 |
| Kronobergs län | 554 | 926 | 1 480 | Stockholms län | 585 | 921 | 1 506 |
| Hallands län | 425 | 757 | 1 182 | Östergötlands län | 602 | 953 | 1 555 |
| Kalmar län | 366 | 795 | 1 161 | Skåne län | 262 | 493 | 755 |
| Stockholms län | 327 | 668 | 995 | Hallands län | 251 | 379 | 630 |
| Skåne län | 318 | 672 | 990 | Kalmar län | 224 | 373 | 597 |
| Uppsala län | 68 | 110 | 178 | Örebro län | 38 | 74 | 112 |
| Örebro län | 61 | 133 | 194 | Dalarnas län | 29 | 63 | 92 |
| Blekinge län | 27 | 95 | 122 | Södermanlands län | 29 | 53 | 82 |

Commuting streams in total 2012-2016

| Year | To | From | Net |
|------|--------|--------|-------|
| 2012 | 11 205 | 9 751 | 1 454 |
| 2013 | 11 660 | 9 842 | 1 818 |
| 2014 | 11 761 | 10 092 | 1 669 |
| 2015 | 12 134 | 10 065 | 2 069 |
| 2016 | 12 684 | 10 138 | 2 546 |

Index for newly registered companies



During 2017 registered 1 779 new companies in the county.

Average income, age 20-64, 2016

| | County | Whole country |
|-------|---------|---------------|
| Women | 264 800 | 278 400 |
| Men | 338 900 | 348 900 |
| Total | 303 100 | 314 300 |

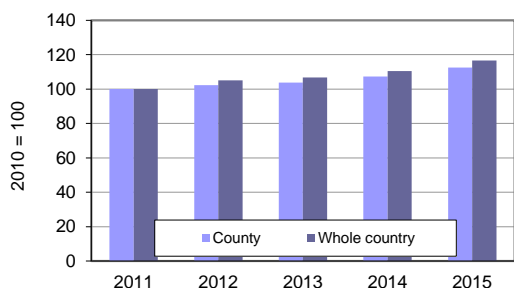
Gross regional product (GRP) 2014

| | County | Whole country |
|--------------|---------|---------------|
| Per capita | 369 000 | 433 000 |
| Per employed | 721 000 | 870 000 |

Tax capacity 2018

| County | |
|---------------------------|---------|
| Average value of tax rate | 32,94 |
| of which municipal tax | 21,68 |
| Tax base kr/resident | 195 880 |
| Tax base index | 94 |
| Whole country | |
| Average value of tax rate | 32,12 |
| of which municipal tax | 20,74 |
| Tax base kr/resident | 208 818 |
| Tax base index | 100 |

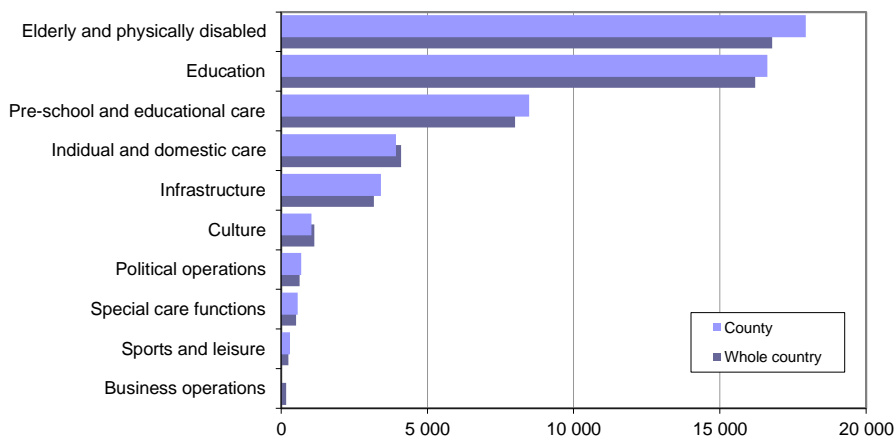
Index for BRP per capita 2010-2014



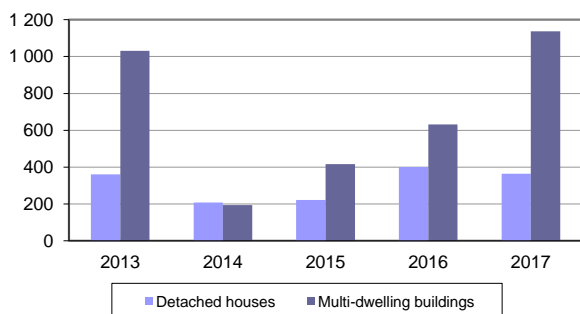
Expenses per resident, mean 2017

| | Kr/resident | Index |
|---------------|-------------|-------|
| County | 53 983 | 104 |
| Whole country | 52 140 | 100 |

Municipal expenses per resident 2017, average for the county



Complete residences in newly built houses



Demographic dependency ratio 2017

| County | Whole country |
|--------|---------------|
| 1,81 | 1,75 |

Calculation: Population (total) / population (age 20-64)

Average age at first child's birth

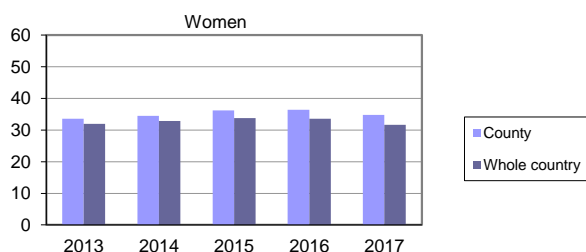
| 2017 | W | | M |
|---------------|--------|---------------|---|
| | County | Whole country | |
| County | 27,9 | 30,5 | |
| Whole country | 29,1 | 31,5 | |

Child care 2017

| Registered children, percent | Whole country | |
|--------------------------------------|---------------|---------|
| | County | country |
| Pre-school, age 1-5 | 82 | 84 |
| School recreation centres, age 6-9 | 79 | 84 |
| School recreation centres, age 10-12 | 21 | 21 |
| Home daycare nurseries, age 1-5 | 5 | 4 |
| Home daycare nurseries, age 6-9 | 1 | 0 |

Greenhouse gas emissions per capita 2014

| | tons/capita | Index |
|---------------|-------------|-------|
| County | 5,04 | 93 |
| Whole country | 5,43 | 100 |

Number of sickdays**Activity- and sick pay 2017**

| Percentage of population (age 16-64) | Whole country | |
|--------------------------------------|---------------|---------|
| | County | country |
| Fulltime | 4,1 | 3,8 |
| All | 5,8 | 5,0 |

Retired by age 2017

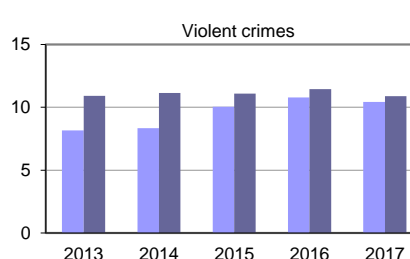
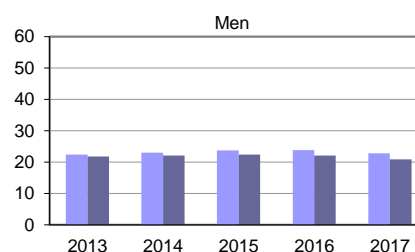
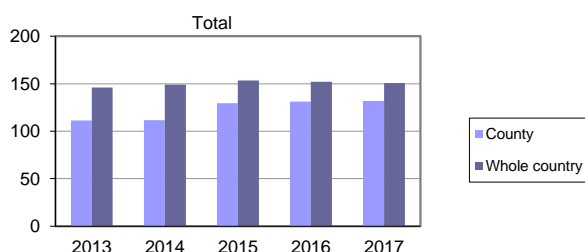
| Percentage of population (age 65-) | % | Number |
|------------------------------------|--------|-----------|
| | County | country |
| County | 20,6 | 73 720 |
| Riket | 19,8 | 2 006 146 |

Elderly care 2017

| Percentage of population (age 65-) | Whole country | |
|------------------------------------|---------------|---------|
| | County | country |
| Homecare | 11 | 11 |
| Special accommodation | 6 | 5 |

Percentage of population (age 80 and older)

| | County | Riket |
|-----------------------|----------|-------|
| | Homecare | 29 |
| Special accommodation | 17 | 16 |

Reported crimes per 1 000 residents

Child care

From July 1 2009 the definition day nursery has been replaced by the definition pedagogical care in the education act.

Completed residences in newly built houses

Multi-dwelling buildings refer to the number of completed flats.

Greenhouse gas emissions

Emissions of CO₂, CH₄, N₂O, HFC, PFC and SF₆ from all sectors of the economy.

Migration surplus

The migration surplus is calculated as the net amount between the number of people migrating to the municipality/county and people migrating from the municipality/county.

Number of sick days

The number of sick days is defined as the number of days with entitled payment from public insurance systems and from the Social Insurance Agency. The number of sick days with entitled payment from employers is not included.

Reported redundancy notices

The statistics only refer to redundancies affecting more than five employees.

Tax base

The municipal tax base consists of taxable income from physical individuals. The tax capacity is calculated as the tax base in Swedish crowns per resident at the start of the assessment year.

Unemployment

Share of population (age 16-64) that does not have an employment.

Unemployed in labour market policy programmes

Refers to people that attends labour market education, vocational training, receives support to start new businesses, participates in preparatory intervention, and participates in different labour market projects.

Value added/GRP

Gross Regional Product (GRP) is the regional equivalence to Gross National Product (GNP). GRP is equivalent to the value of all production of goods and services in a region, which is stated in current market prices. The sum of all regions' GRP is equivalent to the national GNP.

Sources:

Swedish Employment Service
Swedish Companies Registration Office
Swedish Companies Registration Office
Swedish National Council for Crime Prevention
Swedish Social Security Agency
Jönköping County Council
Swedish National Agency for Education
The National Board of Health and Welfare
Statistics Sweden (SCB)
National emissiondatabase